



JUVENILE PROBATION DEPARTMENT

Executive Monthly Activity Report – 2010

Tom Brooks
Executive Director

2010 Year End Summary Brief

In 2010, the department received 17,978 referrals, averaging 1,498 referrals per month, which involved 11,495 youth. A decrease in referral activity was noted when compared to 2009 data (-9.3%). Decreases are notable for unauthorized use of a motor vehicle (-20.3%), disorderly conduct (-18.0%), and city ordinance violations (-17.0%). Larger decreases are seen for burglary (-30.2%), other felony offenses (-25.0%), and felony theft (-24.5%). Although felony drug offenses decreased by 11.5%, misdemeanor AB drug offenses increased by 4.3% with the largest percentage increase in misdemeanor C drug offenses (171.4%), for the second year in a row. Please note for the purpose of this final year-end report, the 2009 data was recalculated using the January 2010 updated codebook to accurately reflect changes in crime from 2009 to 2010 (affects pages 2, 7, and 8).

Felony referrals comprised 13.3% of the total referred. Felony crimes against property reduced by 301 offenses (-27.0%), while felony crimes against persons remained relatively the same. Overall, the top 10 felonies and misdemeanor offenses both experienced a decrease over the previous year at -16.9% and -3.7% respectively. Of the top 10 felonies, burglary of a building revealed the largest decline (-30.2%), while robbery showed an increase of 16.4%, from 140 in 2009 to 163 in 2010. Mischief-\$50-\$499.99 property damage displayed a prevalent decrease (-29.0%), for the top 10 misdemeanor offenses while possession of marijuana for personal use-less than 2 oz. exhibited the highest increase from 738 in 2009 to 830 in 2010 (12.5%). The sum total of homicides for 2010 is 18 compared to 16 in 2009. The profile of the homicide offender for this period is reflective of an African-American or Hispanic male between 16 and 17 years of age. Of the 18 homicide charges, there were 15 actual deaths.

Petitions filed decreased by 481 (-4.1%), from 11,875 in 2009 to 11,394 in 2010. There were also fewer filings on youth, decreasing by 622. Court activity in 2010 displays a decrease in petitions disposed when compared to 2009 (-15.1%). In 2009, 15,456 cases were disposed, while in 2010, it was 13,128. The department experienced a decrease (-11.8%) in youth assigned to TYC from 195 in 2009 down to 172 juveniles in 2010. Certifications for youth increased by one from 56 certifications in 2009 to 57 in 2010. Total youth assigned probation is comparable to 2009 with a slight increase in general caseloads from 35 to 37 in 2010.

There was a decrease (-13.1%) in admits to the Juvenile Justice Center's detention facility from 3,661 in 2009 down to 3,183 in 2010. The number of juveniles admitted to Harris County Juvenile post-adjudicated facilities increased comparing 2009 to 2010 (6.0%). There were 118 more admissions to these county facilities. In 2010, private facility placements experienced a significant decrease of -52.2% over 2009 admits of 582 to 278. This decrease is attributed to efforts in reducing the number of youth in private placement.

JUVENILE PROBATION DEPARTMENT

Tom Brooks
Executive Director



Executive Monthly Activity Report – December, 2010

2010 Referral Data

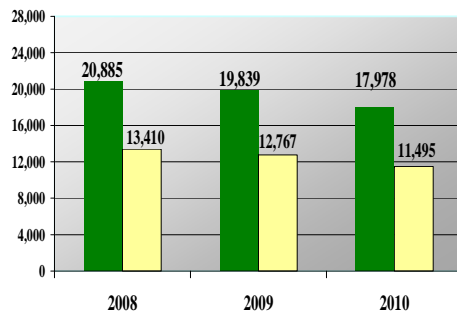
Charges Received	
January	1,383
February	1,665
March	1,939
April	2,119
May	1,740
June	1,447
July	1,050
August	1,025
September	1,204
October	1,501
November	1,477
December	1,428
TOTAL	17,978
AVERAGE	1,498
YOUTH	11,495

Harris County Census Data Comparisons

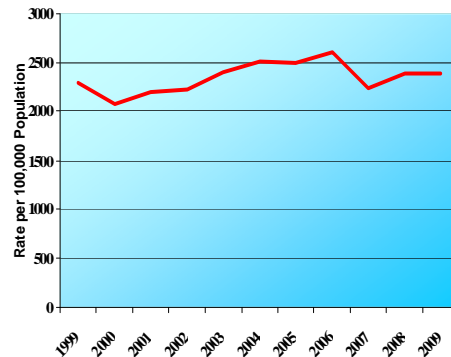
Year	Census Data*	Delinquent Conduct		Felony		Murder	
		Referrals	Rate/100,000	Referrals	Rate/100,000	Referrals	Rate/100,000
1999	390,116	8,945	2,293	3,047	781	15	4
2000	421,768	8,758	2,076	2,950	699	17	4
2001	424,914	9,335	2,197	3,317	781	13	3
2002	429,127	9,551	2,226	3,567	831	16	4
2003	438,868	10,424	2,375	3,185	726	11	3
2004	444,722	11,184	2,515	3,703	833	14	3
2005	448,861	11,187	2,492	3,725	830	13	3
2006	451,874	11,790	2,609	3,850	852	16	4
2007	454,279	10,974	2,416	3,594	791	14	3
2008	453,639	10,333	2,278	3,107	685	27	6
2009	452,494	10,795	2,386	2,899	641	16	4

*Census Data for youth aged 10 - 17

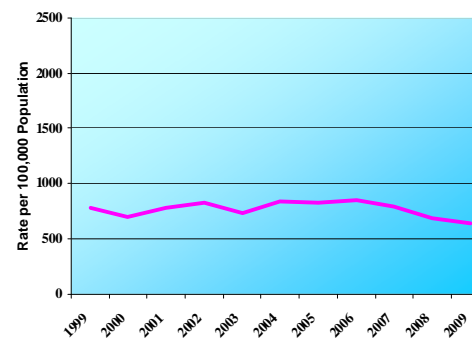
Charges Received as Compared to Youth Involved
January-December 2008-2010



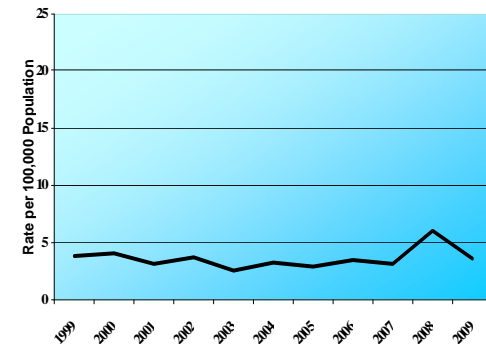
Delinquent Conduct Referrals



Felony Referrals



Murder Referrals



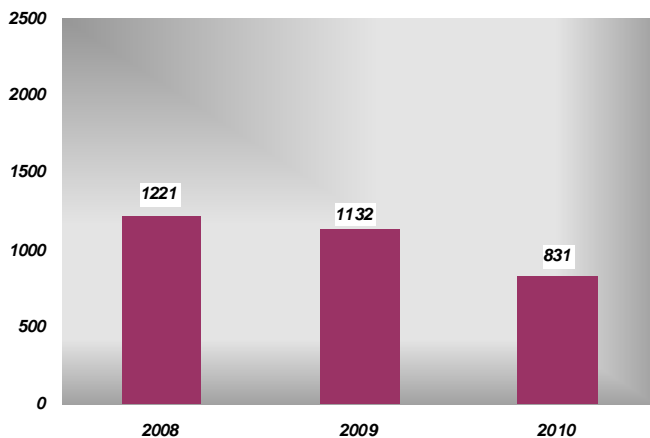


(Page 2 of 12)

Type of Charge Based on Crime Category

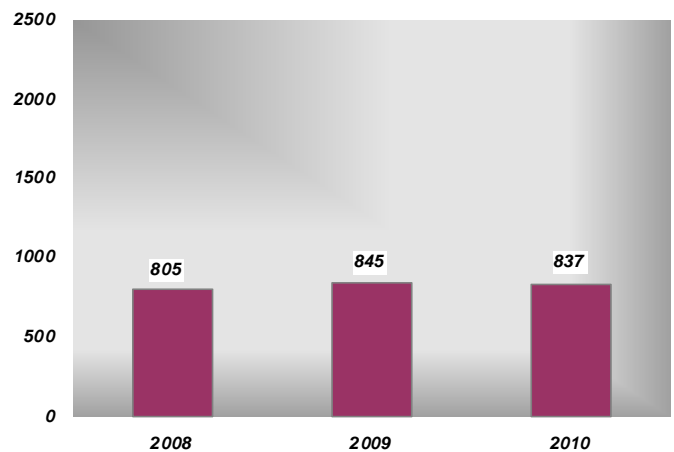
	Jan	Feb	Mar	Apr	May	Jun	Jul	Aug	Sep	Oct	Nov	Dec	TOTAL	% TOTAL
Person (Felony)	102	67	74	83	81	63	51	78	58	63	65	52	837	4.7%
Person (Misdemeanor)	106	146	112	159	145	115	48	55	108	148	157	89	1388	7.7%
Property (Felony)*	68	83	78	82	67	67	65	67	50	72	65	67	831	4.6%
Property (Misdemeanor)	165	189	219	155	172	229	141	170	144	173	172	220	2149	12.0%
Illegal Substance	185	242	253	239	223	105	61	75	157	219	182	142	2083	11.6%
All Others	348	428	501	601	448	383	167	141	243	384	379	319	4342	24.2%
CHINS	21	53	130	303	101	46	84	45	81	45	83	78	1070	6.0%
Violations of Probation	99	123	121	138	126	97	88	74	85	106	103	87	1247	6.9%
Administrative Offenses	289	334	451	359	377	342	345	320	278	291	271	374	4031	22.4%
TOTAL	1383	1665	1939	2119	1740	1447	1050	1025	1204	1501	1477	1428	17978	100.0%

Felony Crimes Against Property
January-December 2008 - 2010*



*Arson, Burglary, Theft, Auto Theft and Unauthorized Use of a Motor Vehicle

Felony Crimes Against Persons
January-December 2008 - 2010*



*Murder, Robbery, Assault, and Sexual Assault

*Offense coding audit using OJJDP and UCR definitional standards was completed January 2010. For the purpose of this final year-end report for the above charts only, the 2009 data was recalculated using the January 2010 updated codebook to accurately reflect changes in crime from 2009 to 2010.



(Page 3 of 12)

Cases Assigned and Disposed January-December 2010

	313th		314th		315th		TOTALS	
	Assigned	Disposed	Assigned	Disposed	Assigned	Disposed	ASSIGNED	DISPOSED
Petitions*	3818	4447	3854	4589	3722	4092	11394	13128
Youth Involved	2992	3443	3048	3470	3070	3235	9110	10148

*Cases that are off the docket, withdrawn, under advisement, passed, or included with another referral have been deleted from these counts.

Petitions Filed and Representative Youth

	Delinquency Petitions Filed	Representative Youth
Jan-Dec 2010	11,394	9,110
2009	11,875	9,732
2008	14,608	12,700
2007	15,706	13,827



(Page 4 of 12)

Court Activity January-December 2010

COURT DECISIONS	Black		Hispanic		White		Other		DECISION	
	Female	Male	Female	Male	Female	Male	Female	Male	YOUTH	TOTAL
Certification	2	30	1	19	0	5	0	0	57	82
Certification Denied	1	9	0	8	0	5	0	0	23	33
CPS Involvement	8	22	1	5	3	7	1	0	47	64
Deferred Adjudication	209	484	226	608	99	266	9	13	1914	2045
Early Termination of Probation	31	103	29	127	13	52	3	3	361	487
Non-Suit/Dismissed	257	795	262	843	130	397	19	19	2722	3002
Not Found CHINS or Delinquent	3	5	0	3	0	2	0	0	13	13
Passed	76	177	54	174	25	66	2	2	576	1131
Passed/Writ	35	126	19	94	6	33	1	0	314	509
Probation*	259	1063	264	1188	89	375	6	22	3266	6060
Probation - Determinate Sentencing**	0	14	0	10	0	5	0	0	29	37
Probation/Restitution*	16	123	14	190	6	47	1	3	400	472
TDC - Bound Over	0	0	0	1	0	0	0	0	1	1
TYC	4	77	4	63	1	10	0	1	160	232
TYC - Determinate Sentencing**	2	3	0	6	0	0	0	1	12	14
Other	106	362	74	350	75	185	5	7	1164	1502
TOTAL	1009	3393	948	3689	447	1455	47	71	11059	15684

*Includes changes of custody

**Approximate numbers - using declared determinate sentencing (DDS) as court result

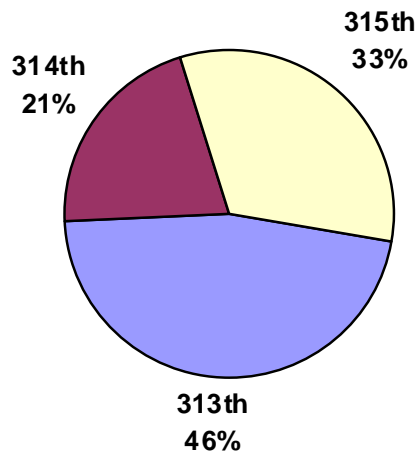


(Page 5 of 12)

TYC Dispositions by Court

Disposition Year	Disposition	313th		314th		315th		TOTAL	TOTAL
		Youth	Dispositions	Youth	Dispositions	Youth	Dispositions	Youth	Dispositions
Jan-Dec 2010	TYC	80	132	36	47	56	67	172	246
2009	TYC	69	104	59	83	67	77	195	264
2008	TYC	86	118	89	103	126	151	301	372
2007	TYC	177	210	171	207	184	211	532	628

TYC Commitments By Court (Youth) January-December 2010



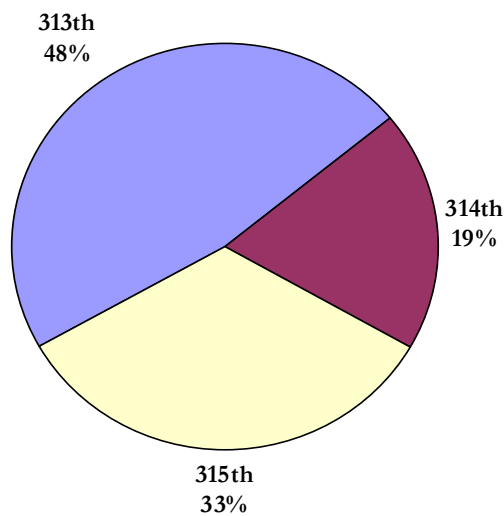


(Page 6 of 12)

Youth Certified

Disposition Year	Court			TOTAL
	313	314	315	
2010	27	11	19	57
2009	22	17	17	56
2008	34	26	23	83
2007	40	26	15	81
2006	42	26	22	90
2005	28	10	18	56
2004	20	22	13	55
2003	16	15	18	49
2002	35	16	33	84
2001	16	4	18	38
2000	31	25	17	73
1999	18	20	26	64

*Certifications By Court (Youth)
January-December 2010*





(Page 7 of 12)

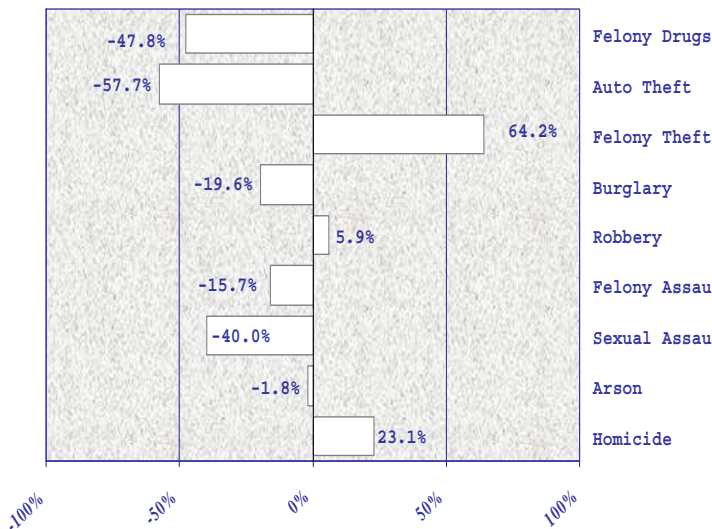
Most Serious Charge Activity*

	1999	2000	2001	2002	2003	2004	2005	2006	2007	2008	2009	Jan-Dec 2010
Homicide	15	17	13	16	11	14	13	16	14	27	16	18
Arson	43	42	42	57	26	54	57	57	29	53	56	52
Sexual Assault	109	94	102	124	130	144	190	186	121	119	148	142
Felony Assault	282	273	293	298	249	359	381	383	315	309	336	352
Robbery	242	284	244	294	257	303	324	355	374	350	345	325
Burglary	879	895	948	1055	982	992	958	937	937	868	791	552
Felony Theft	63	63	74	77	77	91	67	110	106	84	110	83
Auto Theft	57	62	85	57	46	44	52	47	39	33	22	22
Felony Drugs	599	556	644	630	549	750	689	762	762	409	349	309
Serious Offense Totals	2289	2286	2445	2608	2327	2751	2731	2853	2697	2252	2173	1855
Total Referrals	24,641	23,521	21,931	20,496	22,804	25,676	23,480	24,877	23,164	20,885	19,828	17,978
Serious Offense Percent	9%	10%	11%	13%	10%	11%	12%	11%	12%	11%	11%	10%

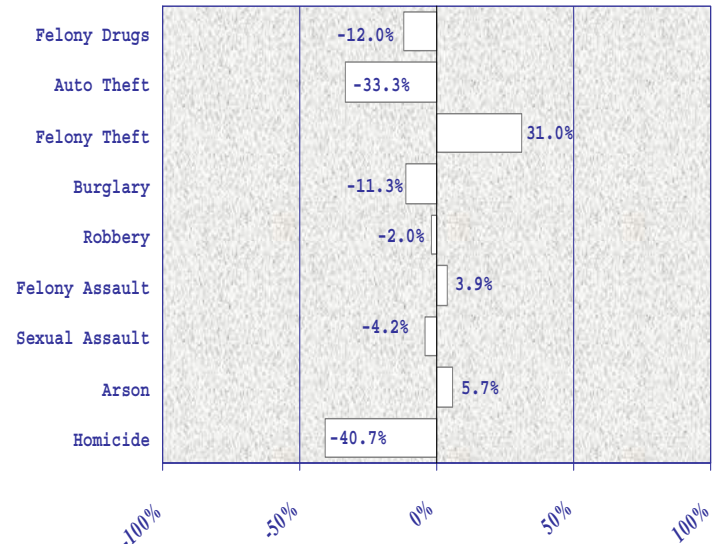
*This chart contains selected offense categories which are summed and shown as a percentage of ALL ACTIVITY TOTALS

For the purpose of this final year-end report for the above table only, the 2009 data was recalculated using the January 2010 updated codebook to accurately reflect changes in crime from 2009 to 2010.

Five Year Offense Comparison Percentage Change, 2005-2009



Most Current Completed Year Comparison Percentage Change, 2008-2009





(Page 8 of 12)

The following table presents a comparison of *January - December 2009* referral activity as contrasted to *January - December 2010* referral activity. During this month, the data shows an overall 9.3% decrease in referral activity. Despite this decrease, increases are found for Homicide (12.5%), Assault-Felony (4.8%), and Misdemeanor A/B Drugs (4.3%). Some notable decreases include Burglary (-30.2%), Other Felony (-25.0%), Felony Theft (-24.5%), and Unauthorized Use of a Motor Vehicle (-20.3%). Less serious offenses reflect an overall decrease of 8.2%.

There were 18 referrals for homicide during January-December 2010, compared to 16 for the same time period of 2009.*

Offense Charge per Referral

Offense	Black		Hispanic		White		Other		Jan-Dec	Jan-Dec	Jan-Dec
	Female	Male	Female	Male	Female	Male	Female	Male	2009	2010	% Change
Homicide*	1	11	0	6	0	0	0	0	16	18	12.5%
Arson	1	7	1	32	0	10	0	1	56	52	-7.1%
Assault - Felony	51	135	21	89	8	46	1	1	336	352	4.8%
- MA/MB	152	339	132	234	63	127	6	7	1219	1060	-13.0%
Sexual Assault	3	54	2	35	2	44	0	2	148	142	-4.1%
Robbery	13	178	8	96	3	23	1	3	345	325	-5.8%
Burglary	18	173	16	229	6	102	2	6	791	552	-30.2%
Theft - Felony	2	37	2	28	2	12	0	0	110	83	-24.5%
- MA/MB	380	459	280	402	284	223	19	23	2159	2070	-4.1%
Auto Theft	4	6	0	10	1	1	0	0	22	22	0.0%
Unauthorized Use of a Motor Vehicle	6	50	3	51	3	9	0	0	153	122	-20.3%
Drugs - Felony	5	63	30	146	18	45	0	2	349	309	-11.5%
- MA/MB	40	371	127	737	65	333	7	18	1628	1698	4.3%
Alcohol MB	0	0	2	1	0	1	0	0	6	4	-33.3%
Other - Felony	25	108	33	164	17	70	1	3	561	421	-25.0%
- MA/MB	258	854	219	910	78	280	3	13	2891	2615	-9.5%
Sub-Total	959	2845	876	3170	550	1326	40	79	10790	9845	-8.8%
Assault - MC	59	126	27	96	3	12	2	3	352	328	-6.8%
Theft - MC	9	27	14	17	10	2	0	0	57	79	38.6%
Drugs - MC	0	4	2	11	0	2	0	0	7	19	171.4%
Alcohol MC	2	8	9	28	2	4	0	0	42	53	26.2%
Other -Misd C	3	33	13	51	3	13	1	1	122	118	0.0%
Disorderly Conduct	140	136	106	181	8	24	3	3	733	601	-18.0%
City Ordinance Violations	41	93	109	231	14	43	0	1	641	532	-17.0%
Violations of Probation	99	489	95	433	23	102	2	4	1289	1247	-3.3%
Sub-Total	353	916	375	1048	63	202	8	12	3243	2977	-8.2%
Runaways - CHINS	153	148	219	143	147	111	9	7	1094	937	-14.4%
Other CHINS	13	26	20	58	3	10	2	1	174	133	-23.6%
TYC Runaways	5	24	3	15	2	5	0	1	97	55	-43.3%
Administrative Actions *	275	1205	322	1428	145	615	14	27	4430	4031	-9.0%
Sub-Total	446	1403	564	1644	297	741	25	36	5795	5156	-11.0%
GRAND TOTAL	1758	5164	1815	5862	910	2269	73	127	19828	17978	-9.3%

Administrative Actions may include offenses such as: motion to modify order, hold as material witness, request of change of custody, issuance of pick-up order, or motion for release and transfer. Offense coding audit using OJJDP and UCR definitional standards was completed January 2010. For the purpose of this final year-end report only, the 2009 data was recalculated using the January 2010 updated codebook to accurately reflect changes in crime from 2009 to 2010. *Of the 18 homicide offense referrals for 2010, there were 15 actual homicides.



(Page 9 of 12)

Top 10 Felony Offenses Jan-Dec 2010	Black		Hispanic		White		Other		Jan-Dec	Jan-Dec	Jan-Dec
	Female	Male	Female	Male	Female	Male	Female	Male	2009	2010	% Change
Burglary of a Habitat (Felony 1)	6	129	15	173	4	65	2	3	563	397	-29.5%
Aggravated Robbery (Felony 1)	4	73	5	58	1	15	0	3	200	159	-20.5%
Burglary of a Building (Jail Felony)	10	35	0	53	2	36	0	3	199	139	-30.2%
Possession/Personal Use - Group 1, Less than 1 Gram (Jail Felony)	2	34	7	62	6	20	0	1	156	132	-15.4%
Unauthorized Use of a Motor Vehicle (Jail Felony)	6	50	3	51	3	9	0	0	153	122	-20.3%
Robbery (Felony 2)	9	103	3	37	2	8	1	0	140	163	16.4%
Aggravated Assault Uses Deadly Weapon (Felony 2)	16	39	4	47	4	19	0	0	134	129	-3.7%
Assault, Bodily Injury Against Public Servant (Felony 3)	24	53	11	20	3	9	1	1	112	122	8.9%
Aggravated Sexual Assault - Children Under 14 Years of Age (Felony 1)	2	40	1	26	1	31	0	2	103	103	0.0%
Prohibited Weapons Switchblade/ Knuckle - Free Zone (Jail Felony)	1	8	3	39	1	18	0	0	88	70	-20.5%
TOTAL	80	564	52	566	27	230	4	13	1848	1536	-16.9%

Top 10 Misdemeanor Offenses Jan-Dec 2010	Black		Hispanic		White		Other		Jan-Dec	Jan-Dec	Jan-Dec
	Female	Male	Female	Male	Female	Male	Female	Male	2009	2010	% Change
Theft - \$50 - \$499.99 Value (Misd B)	358	384	268	285	270	170	19	19	1800	1773	-1.5%
Assault with Bodily Injury (Misd A)	110	275	88	155	28	77	4	5	853	742	-13.0%
Possession of Marijuana for Personal Use - Less than 2 oz (Misd B)	12	184	34	300	16	129	3	10	722	688	-4.7%
Possession of Marijuana -Less than 2 oz in a Drug Free Zone (Misd A)	22	159	70	366	34	170	3	6	738	830	12.5%
Evading Arrest (Misd B)	13	167	19	161	11	47	0	1	439	419	-4.6%
Disrupting a Meeting or Procession (Misd B)	94	168	87	183	14	30	0	1	537	577	7.4%
Criminal Trespass - General (Misd B)	37	160	28	162	11	48	1	3	446	450	0.9%
Assault-Family Member (Misd A)	40	62	43	76	35	48	2	2	349	308	-11.7%
Mischief - \$50-\$499.99 Property Damage (Misd B)	18	80	9	77	6	42	0	3	331	235	-29.0%
Burglary of Motor Vehicle (Misd A)	2	33	2	90	4	44	0	3	225	178	-20.9%
TOTAL	706	1672	648	1855	429	805	32	53	6440	6200	-3.7%



(Page 10 of 12)

Field Services Activity

Type of Probation Service	December					
	2010		2009		2008	
	Youth	Caseload	Youth	Caseload	Youth	Caseload
AfterCare - CUPS 7	278	15	248	16	250	12
Special Programs Unit	243	16	131	9	288	19
Intensive Supervision - SOS	473	15	582	18	580	13
Community Supervision	2351	37	2403	35	3408	49
Adjudication	1436		1631		2243	
Deferred Prosecution - Petitioned	802		646		1165	
Deferred Prosecution (180) - Non-petitioned	113	28	126	n/a	n/a	n/a
Total	3345		3364		4526	

Youth Admitted to Facilities*

Facilities	Jan-Dec	Year Ending		
	2010	2009	2008	2007
BBRC Assessment Center (BAU)	937	889	1426	1712
Drug Unit (BDU)	145	87	82	96
General Admit (BGU)	0	17	39	55
Brief Structural Intervention (BIU)	139	153	187	380
Psychological Unit (BMU)	66	68	110	122
Sex Unit (BSU)	22	14	13	28
Transition Unit (BTU)	68	30	0	0
Burnett Bayland (BBH)	0	95	119	245
Leadership Academy (DBC/HLA)	241	312	561	608
Youth Village (CYV)	476	311	484	656
County Post-Adjudication Subtotal	2094	1976	3021	3902
Private Placement	278	582	633	517
All Post-Adjudication Subtotal	2372	2558	3654	4419
Detention Center* (DET)	3183	3661	3880	4969
Harris County Psychiatric (HCP)	126	137	n/a	n/a
Westside Command Station* (WCS)	0	110	682	0
TOTAL	5681	6466	8898	9388

*Youth admitted is a count of individual youth, not the number of admits each may have had at that particular facility. If a youth was admitted at two different facilities he was counted once at each facility. *Westside Command Station admissions are a subset of detention admits and are included only to show Westside activity.



(Page 11 of 12)
Average Daily Population - December

County Facilities (available beds)	2010				2009				2008			
	Black	Hispanic	White	Total	Black	Hispanic	White	Total	Black	Hispanic	White	Total
Burnett Bayland Reception Center (144)	51	60	21	131	34	61	31	126	39	38	28	104
Assessment Center (60)	27	18	7	53	14	29	14	58	17	18	10	45
Drug Unit (24)	4	28	8	40	4	19	7	30	2	10	12	25
General Admit (12)	0	0	0	0	0	0	0	0	3	3	2	7
Brief Structural Intervention (24)	5	2	1	7	5	3	2	10	3	3	1	7
Psychological Unit (12)	6	4	2	12	6	2	3	12	8	2	1	12
Sex Unit (12)	5	5	1	12	2	5	4	10	5	2	2	9
Transition Unit (12)	3	3	2	7	3	3	1	6	0	0	0	0
Burnett Bayland (60)	0	0	0	0	16	23	4	44	15	20	8	44
Harris County Psychiatric Center (12)	10	2	4	15	40	47	9	96	52	51	10	113
Leadership Academy (144)	31	42	10	83	8	4	6	18	9	8	5	22
Harris County Youth Village (170)	60	58	22	141	51	74	14	140	64	66	25	157
Detention Center (250)	84	53	17	156	74	48	23	146	94	75	29	199
Private Placement												
Texsun Management Group	5	2	2	9	6	6	3	15	8	10	4	23
Child Is Born Outreach	0	0	0	0	1	1	0	2	9	4	0	13
Center for Success & Independence	2	3	3	7	4	4	3	12	4	3	3	10
Daystar Residential, Inc.	0	0	0	0	0	0	0	0	13	4	6	22
Embracing Destiny Foundation	0	1	0	1	0	1	0	1	0	1	0	1
Everyday Life	4	2	1	6	3	3	3	8	1	1	0	2
Gulf Coast Trade Center	8	9	2	19	14	14	7	37	18	17	10	46
UTHC Psychiatric Treatment Center	3	1	2	5	5	4	3	12	4	2	2	7
Hector Garza Center	9	4	1	14	3	1	1	4	0	0	0	0
Krause Center	5	2	0	7	10	3	2	15	5	7	7	18
Minola's Place	0	0	0	0	0	0	0	0	2	0	0	2
Rockdale Justice Center	2	1	1	4	7	2	2	12	6	3	0	9
Renewed Strength Residential	0	0	2	2	1	1	1	3	5	0	1	5
Shoreline Inc.	9	4	1	14	3	1	1	4	0	0	0	0
Shiloh Treatment Center	0	0	0	0	0	0	0	0	5	0	2	6
Texas Adolescent Center	0	0	0	0	0	0	0	0	0	0	0	0
Totally Fit Youth Center	0	0	0	0	1	0	1	1	0	1	0	2
Victoria County JJC	1	2	1	2	3	2	2	6	5	1	1	7
We Care Treatment Center	4	1	0	6	2	1	0	3	1	1	1	3

*Only placements with youth enrolled during the month are shown. *BBRC General Admit and Burnett Bayland Home were closed in September and December 2009, respectively.

*Totals are not exact due to other races that are not shown and due to rounding effects because average numbers are used.



(Page 12 of 12)

Murder Activity

	2000	2001	2002	2003	2004	2005	2006	2007	2008	2009	Jan-Dec 2010
Age											
10					1						
11											
12									1	2	
13							1				
14	3	1	1	3	3	1		1	2	4	
15	8	3	5	1		6	6	7	10		3
16+	6	9	10	7	10	6	9	6	14	10	15
TOTAL	17	13	16	11	14	13	16	14	27	16	18
Race/Sex											
Black Female					2			1	1	2	1
Black Male	2	6	6	2	5	6	3	6	9	8	11
Hispanic Female	1		2	1				1	4		
Hispanic Male	11	5	6	6	4	7	8	1	9	5	6
Asian Female											
Asian Male	1			2							
White Female	1		1		1		2		1		
White Male	1	2	1		2		3	5	3	1	
Other Female											
Other Male											
TOTAL	17	13	16	11	14	13	16	14	27	16	18
School District											
Aldine	4	1	1	1	1	2	4	1	2	1	
Alief	1					3			1	1	
Channelview		1			1						
Clear Creek											
Cypress						1	2		1		1
Deer Park									1		
Galena Park				1						4	2
Goose Creek						1		1	1		
Houston	7	3	2	4	4	3	3	2	5	4	2
Huffman	1										
Humble											
Katy		1					1	1		1	
Klein								1			
La Porte											
North Forest		1	1							1	5
Pasadena			1								1
Pearland											
Spring			2						1	3	3
Spring Branch				1	1						
H.C.Education Dept.			1								
College/University	1							1		1	
Private/Parochial		1	3		3		2	4	1		3
Juvenile Board Charter School	2	2	2			1			1		
Out of County		1	1	1	1		1	1	1		1
Not Available	1	2	2	3	3	2	3	2	12		
TOTAL	17	13	13	11	14	13	16	14	27	16	18

**Of the 2010 homicide charges, there were 15 actual deaths. *Please note referrals are not unique to individuals.*